

## EAST STRATEGIC NEIGHBOURHOOD FORUM

**Day:** Wednesday  
**Date:** 27 March 2019  
**Time:** 6.30 pm  
**Place:** The Community Room, George Lawton Hall, Mossley

Item No.	AGENDA	Page No
1.	<b>APOLOGIES FOR ABSENCE</b> To receive apologies of absence from Members.	
2.	<b>MINUTES</b> To consider the minutes of the meeting of the East Strategic Neighbourhood Forum held on 23 January 2019.	1 - 4
3.	<b>ITEMS FOR CONSULTATION</b>	
a)	<b>EMPLOYMENT INITIATIVES</b> The Director of Growth to present the attached slides consulting Members on the coordinated Employment Initiatives within the Neighbourhood.	5 - 24
b)	<b>FOOD STRATEGY</b> The Director of Population Health to present the attached slides consulting on the Food Strategy.	25 - 44
c)	<b>AGEING WELL</b> The Director of Adult Services to Present the attached slides.	45 - 58

This page is intentionally left blank

## **EAST STRATEGIC NEIGHBOURHOOD FORUM**

**23 January 2019**

**Commenced:** 6.30 pm

**Terminated:** 8.00 pm

**Present:** Councillors Pearce (Chair), Sweeton (Deputy-Chair), Billington, Dickinson, Feeley, Gosling, J Homer, S Homer, Jackson, Patrick, Sharif, Wild and Wills.

**Apologies for Absence:** Councillors J Lane and Taylor

### **3 MINUTES OF THE PREVIOUS MEETING**

The Minutes of the previous meeting held on 17 October 2018 were approved. A number of Councillors commented on the discussion regarding pedestrianisation of Market Street and part of Melbourne Street, Stalybridge.

### **4 LIVING LIFE WELL PROGRAMME: IMPROVING MENTAL HEALTH SUPPORT IN NEIGHBOURHOODS**

The Forum received a presentation from the Interim Director of Commissioning, consulting Members on the development of the Living Well Programme that aimed to create new approaches to mental health support across Tameside & Glossop. The Living Well model sought to change the way the voluntary and public sectors work together to ensure the right support is available to people when it was needed. The programme had been awarded £3.4 million in National Lottery funding over three years to support new local partnerships in Edinburgh, Luton, Salford, and Tameside & Glossop to develop their own versions of an approach which had been established successfully in Lambeth.

Currently in Tameside and Glossop there were a number of options to support people suffering with poor mental health. This new development would directly support individuals struggling to access or receive any mental health support within the existing provision, due to not meeting current thresholds of services and often presented to their GP, A&E and other settings looking for help.

The aim of the initiative was to transform mental health support towards early intervention and prevention, supporting people to live at home and ensuring delivery of high quality and sustainable services. Creation of a Living Well system would support residents to get and keep well by strengthening personal sense of meaning, close interpersonal relationships, and social integration. Involvement in the programme was to be led by key local organisations including: Action Together, the Clinical Commissioning Group, the Local Authority, and Pennine Care NHS Foundation Trust. Service users would have access to each of the local partner organisations working within one Hub to make sure that everyone was receiving the best service for their needs.

The Interim Director of Commissioning advised that the new approach was likely to provide a comparatively low cost and high volume way of freeing up resources in local secondary care services thereby reducing waiting times.

Members of the Forum commented that improvements to mental health services were urgently required and welcomed this initiative to establish an innovative new model of mental health support in the Neighbourhoods. Increasing capacity would ensure access to a range of timely treatment and support options in the community and allowing patients more choice over their care and treatment.

In response to a query regarding improving access to services and support for children and young people with mental health issues, the Interim Director of Commissioning advised that approaches to supporting children's and young people's mental health were being developed and would be subject to further consultation.

In addition, reference was made to the recent success of two schools in Tameside who had received the AcSEED Award - a quality assurance mark presented to schools that had made a substantial effort to support the mental health of their students and encouraged the provision of high quality emotional wellbeing services. It was acknowledged that educating young people on the realities of mental illness was also a big factor in tackling mental health stigma.

The Forum was reassured to note from the Interim Director of Commissioning that robust monitoring of outcomes was integral to the approach to ensure that the vision of transformed services was achieved.

In conclusion, the Chair advised that for general information regarding the programme or to get involved to contact [tccg.livinglifewell@nhs.net](mailto:tccg.livinglifewell@nhs.net).

## **RESOLVED**

**That the content of presentation and benefits that this new model would bring to supporting people with mental health issues in the community be noted.**

## **5 COMMUNITY SAFETY**

The Assistant Director – Operations and Neighbourhoods, delivered a presentation outlining the three key priorities of the Standing Together – Greater Manchester Police and Crime Plan, as follows:

- Keeping People Safe;
- Reducing Harm and Reoffending;
- Strengthening Communities and Places.

The Assistant Director further set out the Tameside Draft Policies as follows:

- Reducing violent crime & domestic abuse;
- Preventing & dealing with crime & anti-social behavior;
- Reducing harm caused by drugs & alcohol;
- Preventing the exploitation of children & vulnerable people;
- Improving community confidence & cohesion.

Progress on all the above priorities was outlined and information given in respect of the formation of a draft strategy. Suggestions were welcomed and should be forwarded to John Gregory, the Head of Homelessness and Community Safety.

Detailed discussion ensued with regard to the content of the presentation and Members commented on the scale of the work to be done. Reference was made to the previous Police and Communities Together (PACT) model which had provided a valuable opportunity for residents, Homewatch members, community groups and Elected Members to meet local police officers to specifically raise issues requiring action.

Mention was also made of a number of successful Homewatch Schemes in the area and the benefits of being part of an active community helping to deter criminals. The Head of Homeless and Community Safety was keen to engage with existing schemes not only in relation to crime prevention but also as an avenue to collect opinions and ideas related to community concerns.

The importance of good communication was also discussed as this would provide reassurance to members of the public that incidents / intelligence they reported had been investigated and dealt with.

**RESOLVED**

**That the content of the presentation be noted.**

**6 BUDGET CONVERSATION 2019-20**

It was reported that Tameside Council (TMBC) and NHS Tameside and Glossop clinical Commissioning Group (T&GCCG) had come together to form the Tameside and Glossop Strategic commission. Together they handled over £900 million of money spent on public services ranging from bin collections through care for the elderly to the provision of GP surgeries. Both TMBC and T&GCCG had to set a balanced budget for 2019/2020. The view of stakeholders, partners and residents were important in helping to understand local priorities and inform the budget setting process. Further information on the budget and the Budget conversation 2019-2020 was available on the Tameside council website at:

<https://www.tameside.gov.uk/tbc/budgetconversation2019-20>.

The same page also included a link to an online survey which gave people the opportunity to have their say on priorities for the budget in 2019-20 and future years. The closing date for completing the Budget Conversation 2019-20 survey was 29 January 2019.

**RESOLVED**

**That the information provided be noted.**

This page is intentionally left blank

---

# East Neighbourhood Strategic Forum

---

## Employment Initiatives

David Berry Head of Employment and Skills

# Tameside Residents

---

- 140,000 of 224,100 (62%) residents are aged 16-64 (working aged) v 63% in UK
- 105,200 (72.6%) residents are currently in employment v UK 75%
- 11,500 (8.2%) residents receive Employment Support Allowance benefit due to health condition...
  - 50% have main condition of mental or behavioural disorders, 14% musculoskeletal
- 13,300 (18%) workless households v UK 14.5%
  - The percentage of children who are in households that are workless is 19% v UK 10.7%
- 15,100 (10.9%) retain no qualifications v GB 7%
  - 95,600 (69.1%) retain a Level 2 qualification v GB 74.7%
  - 36,200 (26.2%) retain a Level 4 qualification and above v GB 38%
  - 1,420 (1.0%) disabled people are claiming benefits v GB 0.8%



# Positive Steps



Careers advice commissioned by Tameside Council

- Targeted at young people aged 13 to 18 (in some cases 25) to help them move into education, employment and training
- As of January 2019, we have **143 NEET** young people
- Participation is at 95.1% which is above target and an improvement in performance from last year.

**23 (16%) come from Tameside East**

- **9 (6%) come from Stalybridge North**
- **6 (4%) come from Stalybridge South**
- **6 (4%) come from East Dukinfield**
- **2 (1%) come from Mossley**

# Careers and Apprenticeship Exhibition

---

- Location of events in recent years: Stalybridge Civic and Hyde Town Hall
- **1,121** students attended in 2018
- Feedback rate of above 90% of pupils who 'found the event useful'
- **17 schools took part in the Exhibition**
- **3 (17%) schools from Tameside East took part (Copley Academy, Mossley Hollins and West Hill)**

# Tameside HACK



Delivered six HACKs to raise aspirations in young people from the borough, creating a digital skills pathway for future industry

- HACKs 1, 2, 3 and 6 were delivered in Ashton, HACK5 was delivered in Guide Bridge and HACK4 was delivered in Hattersley, only to local residents identified by the youth offending team as the most hard to reach children in Tameside.

## **13% (31) came from Tameside East**

- **16 (51%) HACK attendees came from Stalybridge South**
- **10 (32%) HACK attendees came from Stalybridge North**
- **4 (12%) HACK attendees came from East Dukinfield**
- **1 (3%) HACK attendees came from Mossley**

# Tameside Employment Fund

---

- Local schemes and grants to create youth employment
  - Youth Employment Scheme (£6,000), Trade Grant (£750), Business Grant (£1,500)
  - From May 2015, 368 young people supported (inc 273 apprentices)
  - Tameside Council has **committed a further £287k** over the next 2 years (2019-2020) to **Tameside Employment Fund (TEF)**.
  - **TEF** will deliver **£387k** of support including GM funding



# Tameside Business/Trade Grants and YES

---

- Tameside Business Grant - 93% (133) sustained employment. **This scheme has benefitted 11% (17) of residents and 15% (23) businesses in Tameside East.**
- Trade Grant - 94% (101) sustained apprenticeship/employment. **This scheme has benefitted 19% (21) recipients and 12% (14) businesses from Tameside East.**
- Youth Employment Scheme - 116 Job Starts for our young residents. 56% completion rate. **This scheme has benefitted 13% (15) young people and 12% (14) businesses from Tameside East.**

# Adult skills

---

## Major changes to adult skills in Greater Manchester

- £92m in funding devolved to GM from 2019/20
- Greater Manchester Combined Authority will now commission the providers who will deliver in Tameside
- Responsive, flexible with learners at heart
- 3 'Ofsted good' adult colleges including Adult Community Education

# Adult Community Education (ACE) Delivery

**ACE located in Ashton delivering courses to lower level learners upto GCSEs**

- English
- Maths
- ICT
- Community based courses

**ACE deliver in Ashton and Hyde:**

- Holy Trinity (AUL)
- St. Peter's Children's Centre (AUL)
- Wellbeing College (AUL)
- St. Georges Primary (HYDE)
- Greenfield School (HYDE)



**67 enrolments per year - 17% of ACE learners come from  
Tameside East**

# Inspiring Digital Enterprise Award (iDEA)

---

- Like the Duke of Edinburgh's Award, iDEA is a recognised qualification that can enhance CVs
- Learn essential life skills through iDEA: keeping safe online managing money; keeping data safe; and making digital media

**We have worked with schools, colleges, businesses and stakeholders to establish iDEA across the borough.**

- **Launched iDEA with introductory workshop at CoderDojo, Active Ashton**
- **Delivered iDEA workshops in partnership with Ashton Job Centre, Tameside and Glossop Integrated Care NHS Foundation Trust, Hyde Community College, Clarendon Sixth Form and TMBC Workforce Development**





# Working Well

---

## Greater Manchester Working Well

- Started in 2014 as £6m pilot, now a £54m programme
- 2,500 residents supported so far 300 starting work
- One to one support, 18 months, person centred
- Innovative work with GP Practices to engage residents

**There were 317 referrals to Working Well from Tameside Jobcentre Plus in 2018; 183 (58%) from Ashton and 134 (42%) from Hyde**

# Support for Ex-Offenders

---

- Ex-offenders have also been supported via the **Working Well** programme
- **532 (14%) out of the 3750 Working Well participants have noted a criminal conviction**
- **45 (8%) of those are from Tameside.**
- **4 (9%) out of the 45 participants have achieved a job start.**

# Routes to Work



- Supported employment service within TMBC
  - Learning Disability
  - Autism
  - Acquired Brain Injury
  - Mental Health
- Deliver services in locations across the borough (not in homes)
- We would like to build our network of employers

# Routes to Work employability programme

---

1. **Work out for Work by Tameside ACE** - 8 people attended that have significant barriers to employment because of a disability, or a health condition.
2. **Autism/Learning disability in partnership with People First** - employability programme for 6 people with autism or learning disability. There is a vacancy at the end of the course, that participants can apply for, this course addresses other social issues that are/or can be attributed to work.

**Routes to Work are supporting 28 (22%) people from Tameside East**

- **7 (25%) have moved in to paid employment**

# Pre-Employment Programmes #1

---

## **Introduction to T&GICFT, Assessment, Application and Interview Day**

- Location of event: Ashton Market Hall
- Attendees provided by all Jobcentres, Routes to Work, Working Well, i2i and Positive Steps to ensure engagement across the borough.

## **32 residents attended seeking Health Care and Domestic roles**

- **8 (25%) people securing employment in this field**
- **8 (25%) in Administrative posts.**
- **16 residents were employed in apprenticeship roles giving a success rate of 50%.**

# Pre-Employment Programme #2

---

- Robertson pre-employment pathway
- Location of events: Dukinfield and Ashton-under-Lyne
- This supported take up of roles with the Council's contracted building management company for Facilities Management.
- Catering, care taking and cleaning roles within our schools and office buildings were available.



# Jobs Fairs

---

- Location of events: Hattersley, 2017 – **350 attendees**, Ashton-under-Lyne, Jigsaw 2018 – **750 attendees**
- Borough wide offer - It's open to everyone and there is no need to book
- As well as job vacancies, the event offers the chance to speak to employers to discuss career prospects, and information about training, skills and adult learning is also be available.
- Firms who have participated: **Able Care & Support Services Ltd, BSS LED, G4S Security, Greater Manchester Police, Ikea, National Health Service, North West Ambulance Service, O2, People Plus**, as well as many more.

# Age Friendly Work

---

- There are many offers of support available in Tameside to enable people to remain in the workplace or take up volunteering as they age:
- **The Working Well programme** assists Work-related Activity Group (ESA) and Universal Credit claimants to **progress towards, get into, and stay in work.**
- **Adult and Community Education** services aim to increase the level of skills and employment locally, with the Digital Skills Programme, including **iDEA**, focussing specifically on **developing the digital skills approach and network in Tameside.**
- Support available to **help people to start up businesses** and take up volunteering opportunities, in addition to **Routes to Work.**
- Further help is provided by **Action Together's Volunteer Centre** in Ashton, which helps Tameside organisations find volunteers.



# Questions?

---

Contact details:

[david.berry@tameside.gov.uk](mailto:david.berry@tameside.gov.uk)

Head of Employment and Skills

07854163188

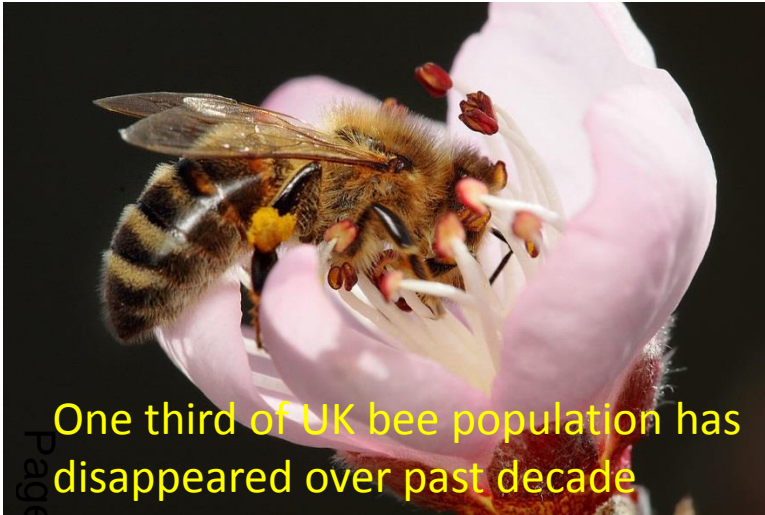
This page is intentionally left blank

# A healthy and sustainable food strategy for Tameside

Liz Harris

Programme Manager, Population Health  
Chair, Tameside Food Strategy Group

# What is the connection between these things?



Diet related disease the biggest risk factor for ill health in the UK

What is the connection between these things?



One third of UK bees  
disappeared over



ing  
sea ice

# The FOOD we eat



Over a million seabirds every  
year killed by plastic pollution

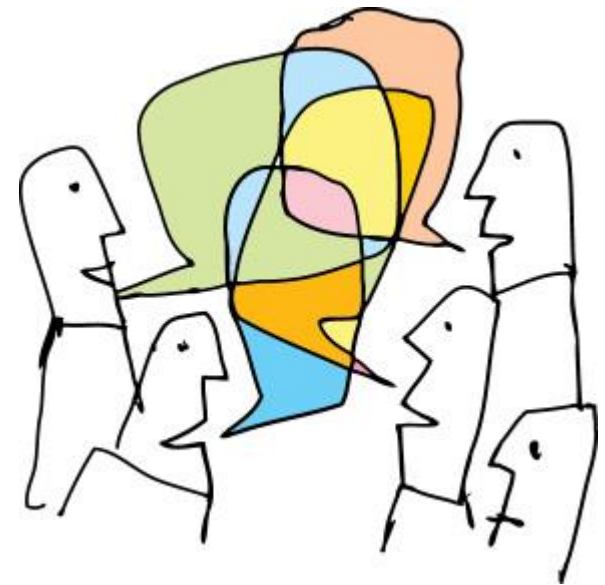


Diet related disease the biggest risk  
factor for ill health in the UK



# Why food and why now?

- We are not succeeding in reducing obesity or diet related disease
- Why have we got the food culture and system we have?
- Does it work for our health, communities, economy and planet?
- Is it doing more harm than good?
- What do we want to do about it?
- We are starting a bigger and broader conversation about food





A balanced diet is essential for health and wellbeing









# Out of home food offer

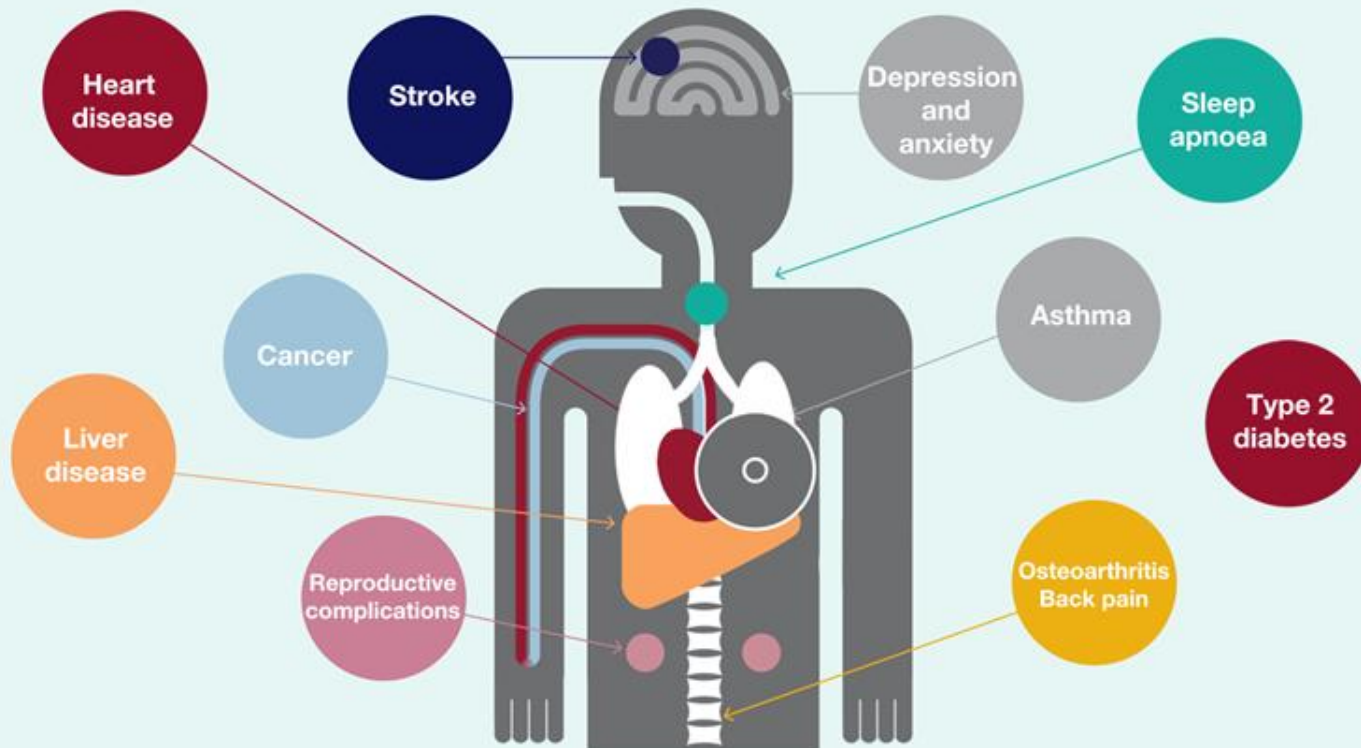


Where is the takeaway capital of the UK? Fast food towns 'dominated' by burgers and kebabs revealed



# Is it all about obesity?

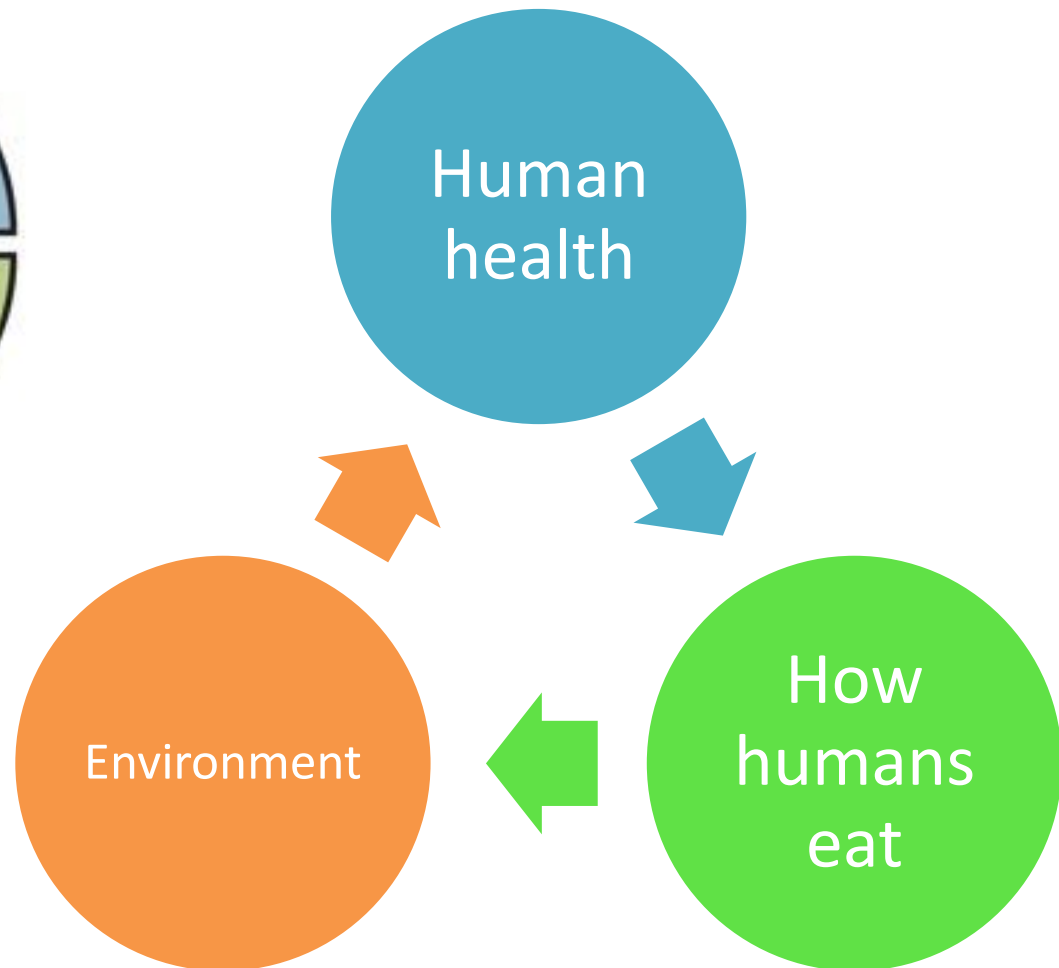
## Obesity harms health



# Ecological public health



Page 33



# Carbon reduction

- **Food's carbon** footprint, or foodprint, is the greenhouse gas **emissions** produced by growing, rearing, farming, processing, transporting, storing, cooking and disposing of the **food** you eat. ...
- Changing the **foods** that you eat can have a big impact on your **carbon** footprint.



# Food and greenhouse gas

## How much impact does food have?

Proportion of total greenhouse gas emissions from food

A quarter of global emissions come from **food**

Food  
26%

Other greenhouse  
gas emissions 74%

More than half of food emissions come from **animal products**

Animal products  
58%

Other food  
42%

Half of all farmed animal emissions come from **beef and lamb**

Beef & lamb  
50%

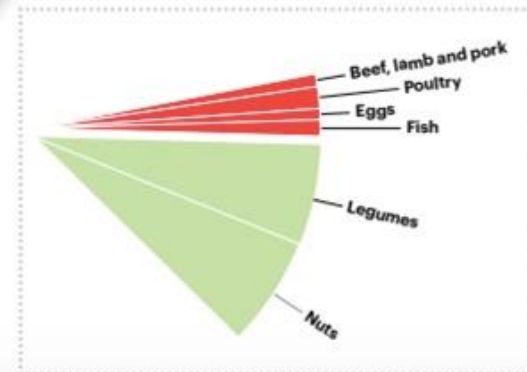


Other animal  
products 50%



# The Planetary Health Plate

Page 36



# Food can fix it

- Youtube 50.54 to 53.06
- <https://www.youtube.com/watch?v=6ZU9kQpXLjA>

Page 37



**SO,  
WHAT'S  
THE  
PLAN?**



# Tameside Food Partnership



Promoting healthy and sustainable food to the public

Tackling food poverty and access to affordable healthy food

Building community food knowledge, skills and projects

Promoting a vibrant and diverse sustainable food economy

Transforming catering and food procurement

Reducing waste and ecological footprint of the food system

# Opportunities in Tameside

BEYOND THE  
FOOD BANK.



Page 40

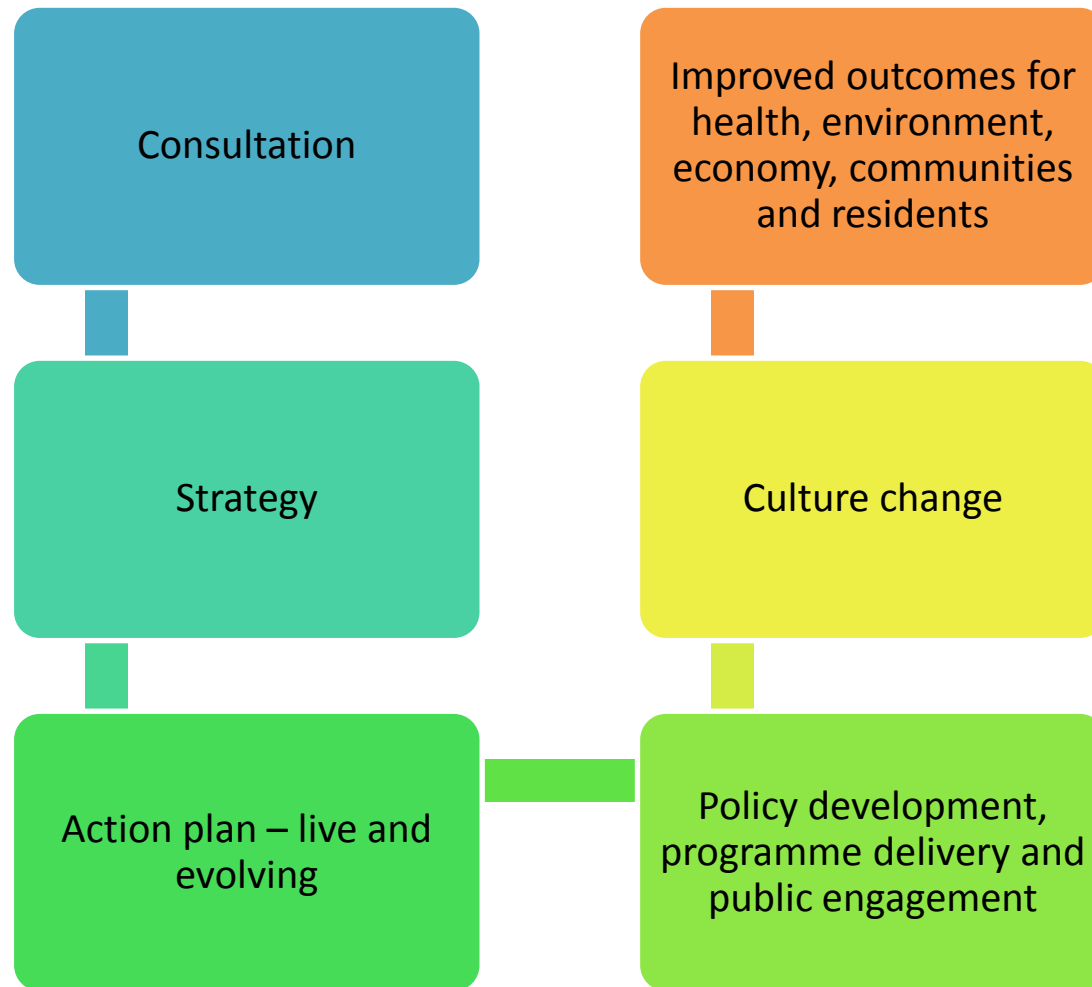


THE SHED

*Men in Kitchens*



# Next steps



# On-line survey

<https://www.tameside.gov.uk/foodsurvey>

- For all Tameside residents 16 years and over
- Smart phone compatible
- About 10 minutes
- Please mention to friends and family
- We want to know what Tameside thinks and begin a conversation about better food



# Thank you

**Please complete our survey**

<https://www.tameside.gov.uk/foodsurvey>

This page is intentionally left blank

---

# Age Friendly Tameside: Working Together in Partnership

---

Page 45





# Where Does It Start

---

Page 46



Creating environments where older people are respected, recognised and included in the community and the family.



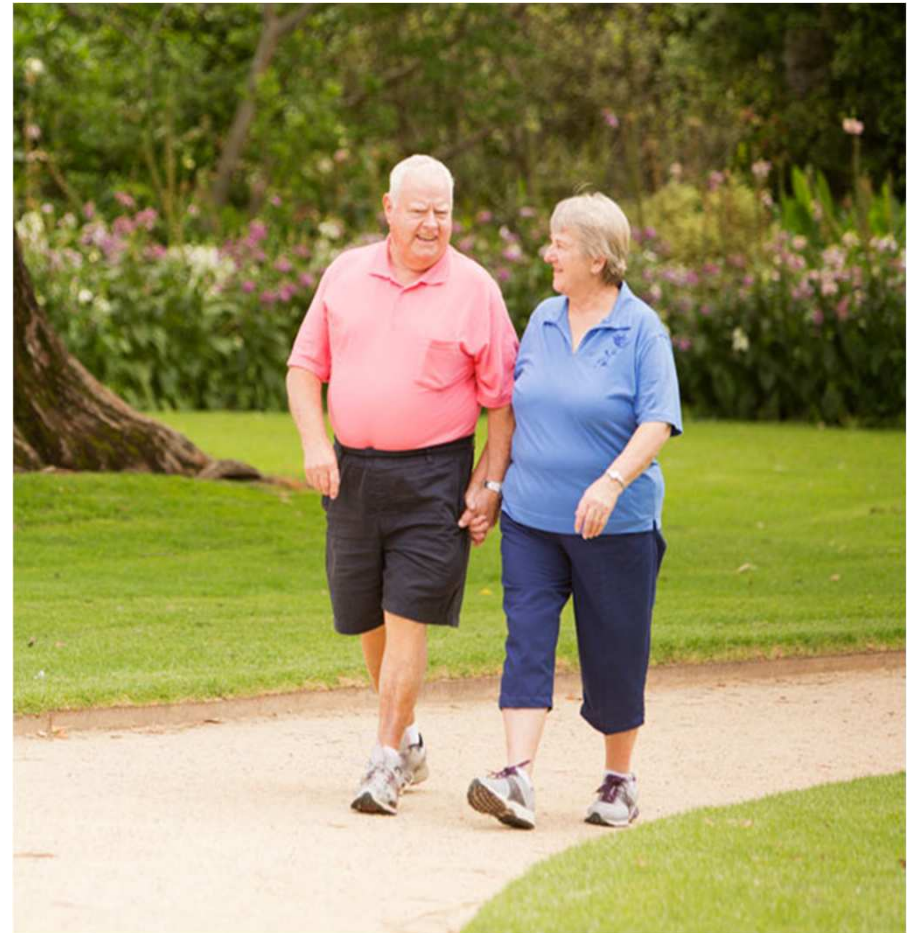
# Where we live

---

Outdoor spaces and buildings

Appropriate and affordable housing

Accessible and affordable transportation



# Where we live



## ***Take a Seat Campaign***





# Where we live



# Where we live

---

## The Together Centre @ Loxley House

“We want to be a place of possibility. We want to be a place where people can come together, feel safe, well and happy. Where people can learn and grow and feel a sense of pride and ownership.....”

The Shed, Men in kitchens:

[https://youtu.be/zAxTOz5I\\_PQ](https://youtu.be/zAxTOz5I_PQ)

# What we do

---

Page 51



Social Participation

Civic Participation and  
Employment

Communication and  
Information



# What we do

---

Page 52



# LIFE IN TAMESIDE & GLOSSOP

**JSNA web portal**

[www.lifeintamesideandglossop.org](http://www.lifeintamesideandglossop.org)

# Find Support

Home » Services

## Tameside and Glossop Support Directory

To find your nearest point of support, please use the filters below:

1 Please select your area

Ashton

2 Please select your service

Medical

SHOW RESULT

0 Services are available for you:  
Sorry, we could not find any services at this time.

Search area or neighbourhood. If you are not sure what ward you live in then you can put your post code in the map on the home page and it will show you which ward you live in or interested in.

Here you just look for the services or groups you are interested in. Once you have chosen if there is something in you area a list will appear here.

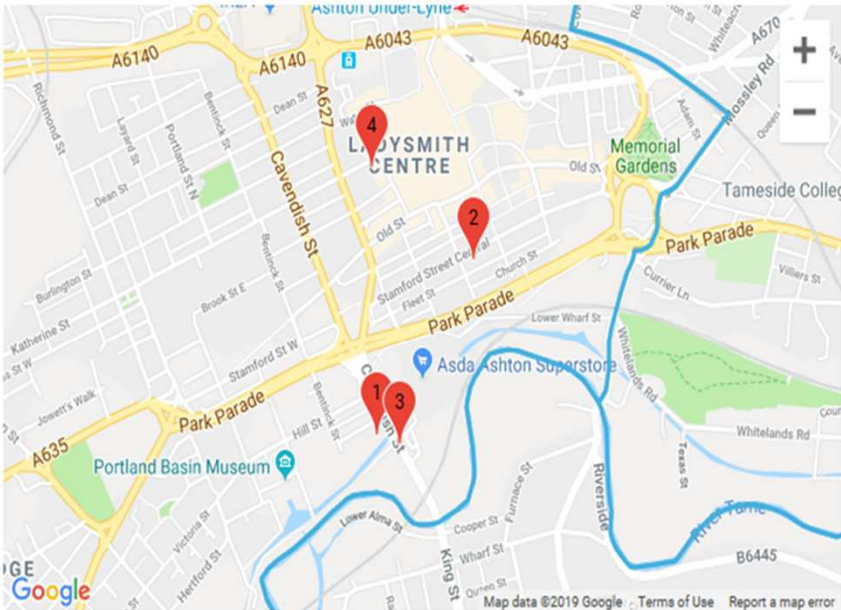


https://www.lifeintamesideandglossop.org/service/ | Homepage - Tameside Intranet | At A Glance Archives - Life i... | Services Archive - Life in Tame...

Home » Services

## Tameside and Glossop Support Directory

**SHOW RESULT**



4 Services are available for you:

- 1 Tameside Women and their Families Centre**  
 41-46 Cavendish Mill,  
 Bank Street,  
 Ashton -Under -Lyne,  
 OL6 7DN
- 2 Tameside Citizens Advice Bureau**  
 Clarence Arcade  
 Stamford St  
 Ashton-under-Lyne  
 OL6 7PT

Map data ©2019 Google | Terms of Use | Report a map error

08:39 03/01/2019

# Next Steps

- Service and Support information has been collected from different groups. The drop down box in the find support page will include a community groups-this will link direct to the Action Together Community directory.
- Each community asset has a page with brief information about what they do and how to contact them.
- The intention is that the 'Support' area of the website will be owned and managed by people working across the system in social prescribing roles.

# How we get support

---



Affordable, good quality and appropriate Community Support and Health Services

# Summary

---

